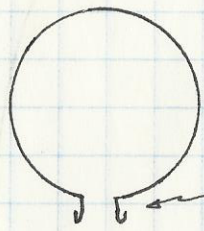


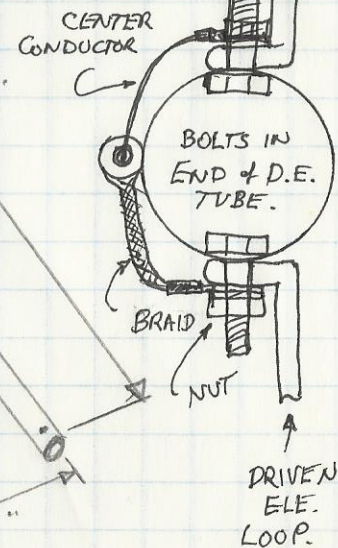
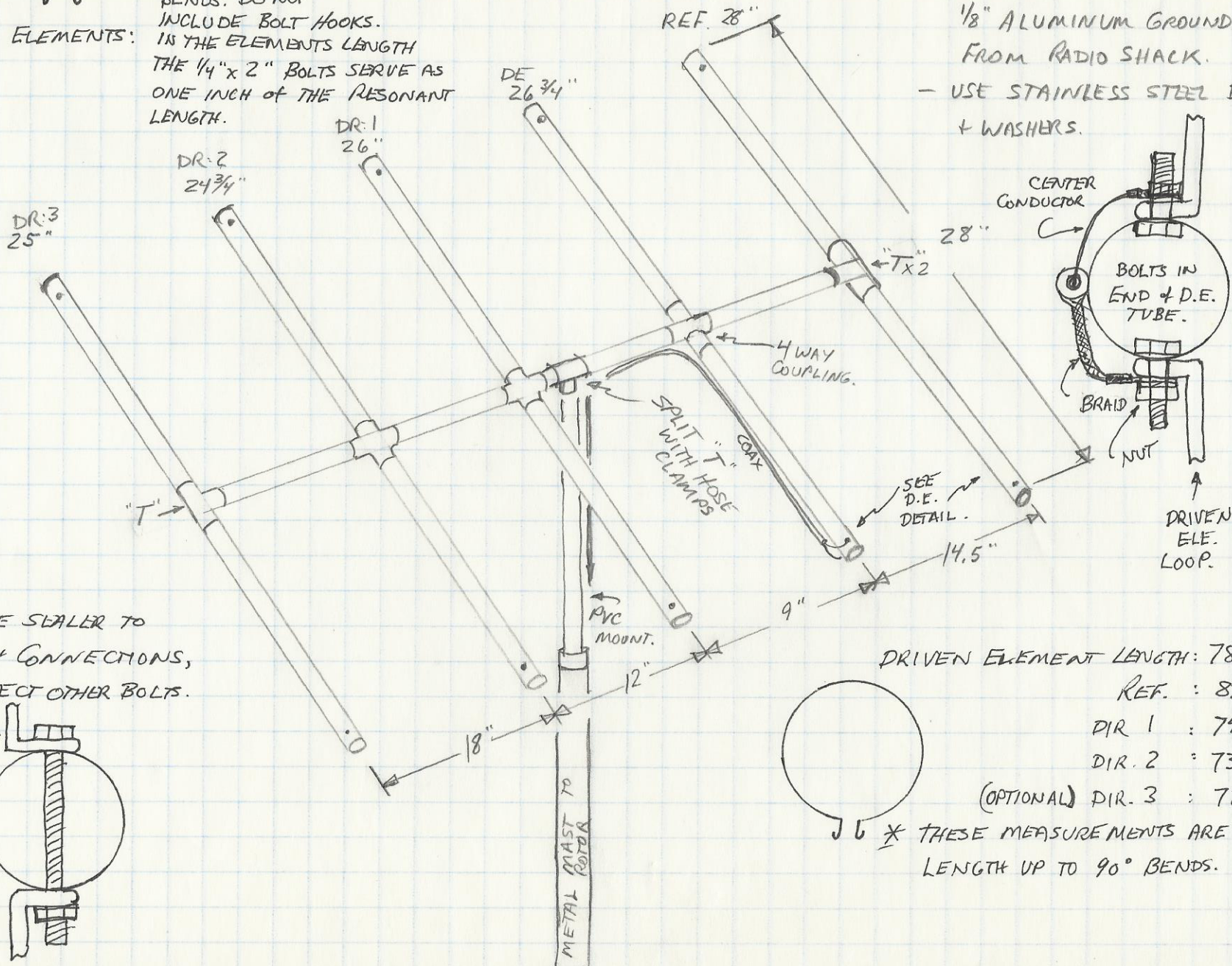
DIMENSIONS CIRCULAR QUAD:



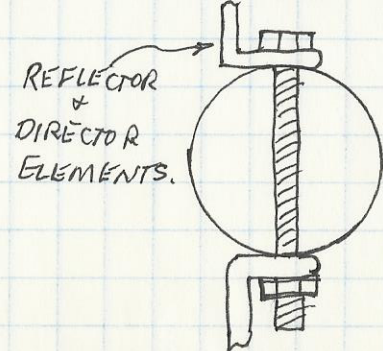
\* MEASURE TO 90° BENDS: DO NOT INCLUDE BOLT HOOKS.  
 ELEMENTS: IS THE ELEMENTS LENGTH THE 1/4" x 2" BOLTS SERVE AS ONE INCH OF THE RESONANT LENGTH.

51" TOTAL BOOM LENGTH  
 PIPE AND COUPLINGS ARE PVC SCHED. 40; 3/4"

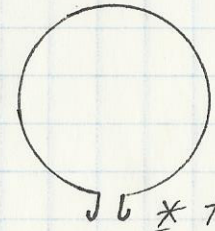
- ELEMENTS MADE FROM 1/8" ALUMINUM GROUND WIRE FROM RADIO SHACK.
- USE STAINLESS STEEL BOLTS + WASHERS.



USE SILICONE SEALER TO SEAL COAX + CONNECTIONS, AND TO PROTECT OTHER BOLTS.



- DRIVEN ELEMENT LENGTH: 78 3/4"  
 REF. : 83"  
 DIR 1 : 74 1/8"  
 DIR. 2 : 73 1/8"  
 (OPTIONAL) DIR. 3 : 72"-?



\* THESE MEASUREMENTS ARE LENGTH UP TO 90° BENDS.